

Krampe

QUALITY ON WHEELS



PUSH-OFF TRAILER

RamBody



AS 22-GB

**A PUSH-OFF TRAILER
LIKE ONLY
WE BUILD IT.
A KRAMPE ORIGINAL.**

QUALITY ON WHEELS



KRAMPE PUSH-OFF TRAILER

RAMBODY AS 750



A PUSH-OFF TRAILER? THE PUSH-OFF TRAILER!

For more than 30 years, Krampe has been offering transport solutions for the agricultural and industrial sector. Durable and well thought-out - such as the successful BigBody tippers.

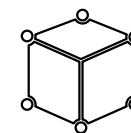
Now brandnew and ready for you:

Discover the first push-off trailer in Krampe quality. The RamBody: Innovative, robust, benchmark-setting in terms of driving comfort and quality.

The RamBody is our response to the increasing demand for a really powerful horizontal unloading trailer - practice-oriented and practicable as users' wishes and suggestions are our most important inspiration.

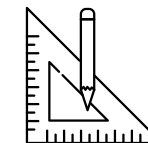
Let you be enthuse by the results of two years of development work and around a thousand test hours with prototypes. Experience all the advantages of the perfect combination of a new unloading body and highest driving comfort.

The RamBody complements our range by a further product in the pioneering Krampe quality - powerful in operation, stable in value.



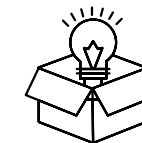
41,1 m³

Transport volume
according to DIN 54321
and 24 t GVWR



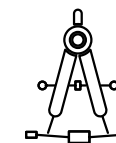
COMPACT

Solid body
construction with slim
external dimensions



CLEVER

Modular construction,
genious details from over
30 years experience



DESIGN

Innovative
design, distinctive
outlines



SAFE ON ROUGH TERRAIN.

**INNOVATIVE PUSH-OFF TECHNOLOGY - MATURE RUNNING GEAR.
THIS IS THE RAMBODY.**

The running gear carries everything.
It is fundamental for the price-performance ratio of a special vehicle.

We develop individual solutions for all types of operation.
Discover our comprehensive range of drawbars, running gear constructions and tyre options.

Krampe - superior know-how in terms of running gears:

- Easy to handle thanks to maximum manoeuvrability
- Efficient thanks to excellent easy towing characteristics
- Reliable and stable also in case of extreme use
- Performant components for the highest quality requirements



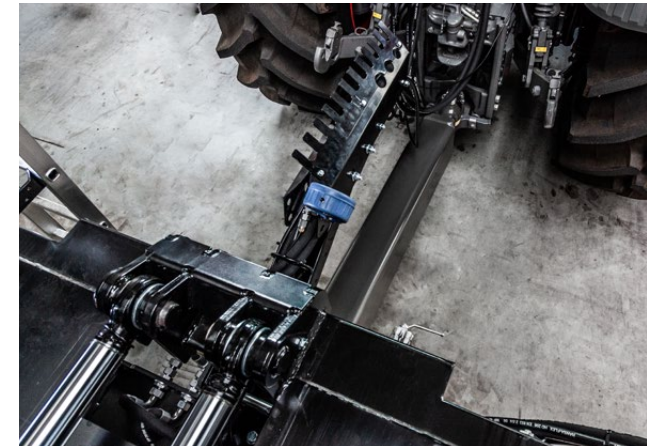
BPW steering axles

BPW steering axles with overhead brake cylinders. A Krampe innovation.
Currently only by us.



Ground clearance

Stable on the ground - but with much ground clearance. Positioning of all components above the axle tubes. That way, you come through terrain undamaged.



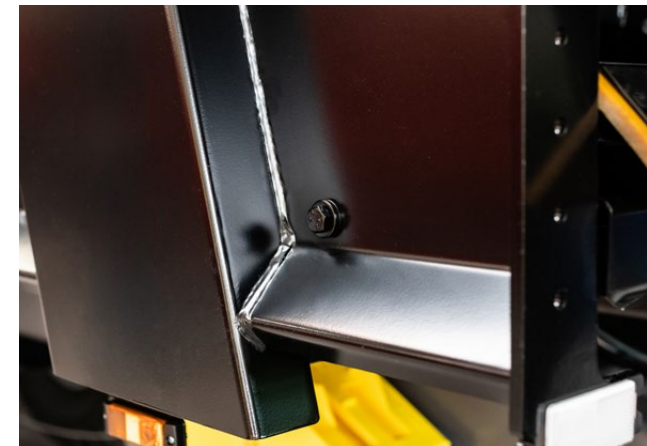
Small turning radius

Thanks to its narrow design, the drawbar enables a very **large turning angle**. This noticeably reduces the turning radius. In the case of the optional forced steering, the adjustable bumper buffer device can be adjusted to the tractor.



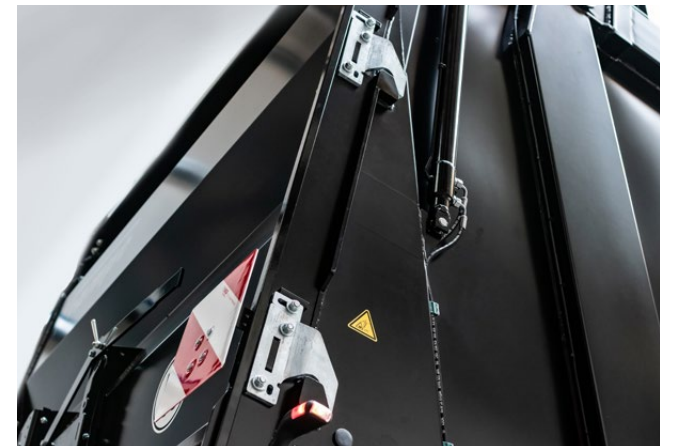
Underride guard

The modular underride guard can be **swivelled upwards** in a user-friendly manner. It has been approved according to the latest EU type-approval VO 2015/208. The **bolted construction** can quickly be replaced if necessary.



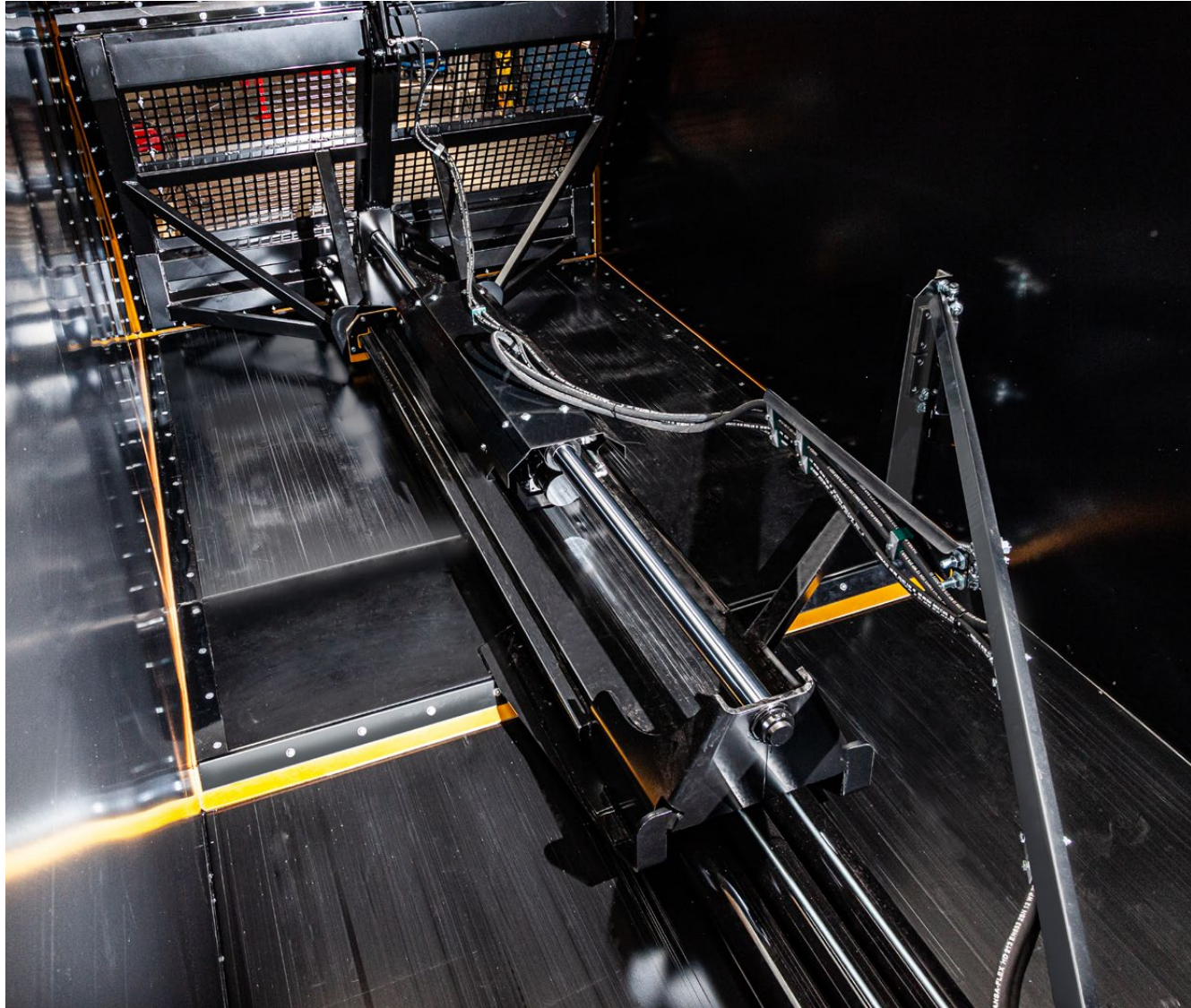
Proper edges

The entire vehicle construction consistently pursued the objective of avoiding deposit points. Edges were throughout designed as slants. That means that no crop remains on the vehicle.



Grainproof locked

The rear tailgate: Pressed on by **four locking wedges**. Adjustable and therefore grainproof also after many operation years.



Push blade

The core of the push-off trailer is the push blade on the **moving floor unit**. The narrow designed tunnel in the middle protects the **five double-acting hydraulic rams** from damages. Integrated plastic slide rails facilitate the shifting mechanism through lower force. The push blade has a full-surface lattice look providing an **optimum view in the loading**

compartment. The upper forty centimeters can be folded down as standard. The energy supply is **simply and robustly** solved by a **scissor mechanism**. The clear look rounds off the overall appearance.



Stable body design

Edged external stanchions for **more stability**. Narrow design for a **wider loading compartment** - including solid optics.



Simply adjusted - Seals

Adjustable seals lock the push blade on all edges and guarantee a **grain-proof** push-off trailer construction.

#READYFOR FUTURE

SAFE & VALUABLE ACC. EU (VO) 167/2013
KRAMPE - QUALITY ON WHEELS

The advantages of the EU type-approval

Type-approved vehicles are being delivered with **COC documents** and new type plates for problem-free European homologation.

Investing in a Krampe vehicle is sustainable and safe.
More at www.krampetrailer.com/readyforfuture



TECHNICAL DATA

Body dimensions, inside	7.51 x 2.37 x 2.00 m (35.4 m³)
Transport volume with 30 cm extensions	41.1 m³
Permissible GVWR on public roads	22,000 (24,000 kg**) at 40 km/h
Payload according to German traffic regulations	Approx. 13,700 kg (approx. 15,700 kg **)
Technical possible payload	Approx. 22,000 kg
80 mm ball head coupling, permissible tongue load	4.000 kg
Oil quantity / operating pressure	Approx. 38 liters / 200 bar
2 x BPW brake axles, axle cross section	120x120 mm/ 150x150 mm**
Wheel bearings, rated for	10.0 t / 13.0 t** per axle at 40 km/h
Running gears**	Pneumatic running gear with large air bellows hydraulic running gear parabolic springs with balancing rocker
Platform height with 600/ 55 R 26.5 tyres	1.65 m (1.72 m with 30,5" tyres**)
Unloading time for 40 m³ silage maize	Approx. 45 seconds at 100 liters/minute

* Empty weight and platform height with reference tyres 600/55 R 26.5

** Option against surcharge / depending on equipment

RamBody 750

Traction power requirement	from 132 kW (180 PS)
Empty weight	approx. 8,300 . 9,300 kg*
Hitch height	approx. 55 - 70 cm
Max. unloading weight	approx. 24,000 kg (depending on load)
Wheel brakes	410 x 120 mm/ 410 x 180 mm**
Track width	1.95 m / 2.15 m**
Brake force regulator	automatically depending on load
Wheelbase	1.55 m (1.81 m)
Vehicle width	2.55 m / 2.75 m** / 3.00 mm **

THE ADVANTAGES OF THE RAMBODY AT A GLANCE

>>> PUSHING INSTEAD OF TIPPING

Tipping impossible? Then pushing is the solution - for example in low-height halls or on rough terrain. The RamBody low centre of gravity constantly ensures stability.

>>> RELIABLE IN ALL SEASON

Regardless whether grass silage, cereals, maize, potatoes, beets or other goods to be transported, the RamBody can be operated economically all year round.

>>> DRIVING COMFORT AT THE HIGHEST LEVEL

Running gears are our speciality. High-quality components, an extremely wide range of options and tyre dimensions up to 30.5" leave no wish unfulfilled. Krampe running gears are rightly the market benchmark.

>>> WELL THOUGHT-OUT DESIGN AND CLEVER DETAILS

The RamBody design was developed in close cooperation with users. The objective: Optimum solutions for the practice. With many details facilitating the work - for example by consistently avoiding dirt accumulation points.

>>> READY FOR THE FUTURE THANKS TO THE EU TYPE-APPROVAL

Since the end of 2020, all Krampe vehicles are delivered according to the EU type-approval EU (VO) 167/2013. This guarantees a simple homologation and assures a high value retention.

We are glad to help you!



Helmut Hövelmann

Sales Director

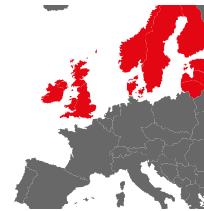
Mobile: +49 171/69 35 221
hoevelmann@krampe.de



Frank Meibes

Head of Export Sales

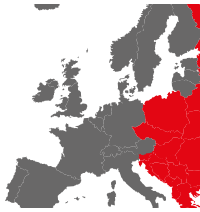
Mobile: +49 151/17 28 70 23
meibes@krampe.de



Kenneth Brønner

Sales Manager Northern Europe

Mobile: +49 151/16 89 08 54
bronner@krampe.de



Petr Polehla

Sales Manager Central Europe

Mobile: +49 170/ 24 75 382
polehla@krampe.de



Pascal Chont

Sales Manager France

Mobile: +33 7 87 16 93 85
chont@krampe.de

Distributors in your area?

Our internal sales
team is glad to
help you!



Katharina Meßling

Sales back office

Phone: +49 25 41 / 80 178 - 67
vertrieb@krampe.de

Krampe
QUALITY ON WHEELS

Krampe Fahrzeugbau GmbH

Zusestraße 4, D-48653 Coesfeld-Flamschen

Phone: +49 25 41 / 80 178 - 0 | E-Mail: info@krampe.de

www.krampetrailer.com/rambody

...always a nose ahead!



Your distributor will be glad to advise you!